

AMANUS MOUNTAIN

SE - Turkey (Dörtyol Region)

Ecological Map

prepared by the research project



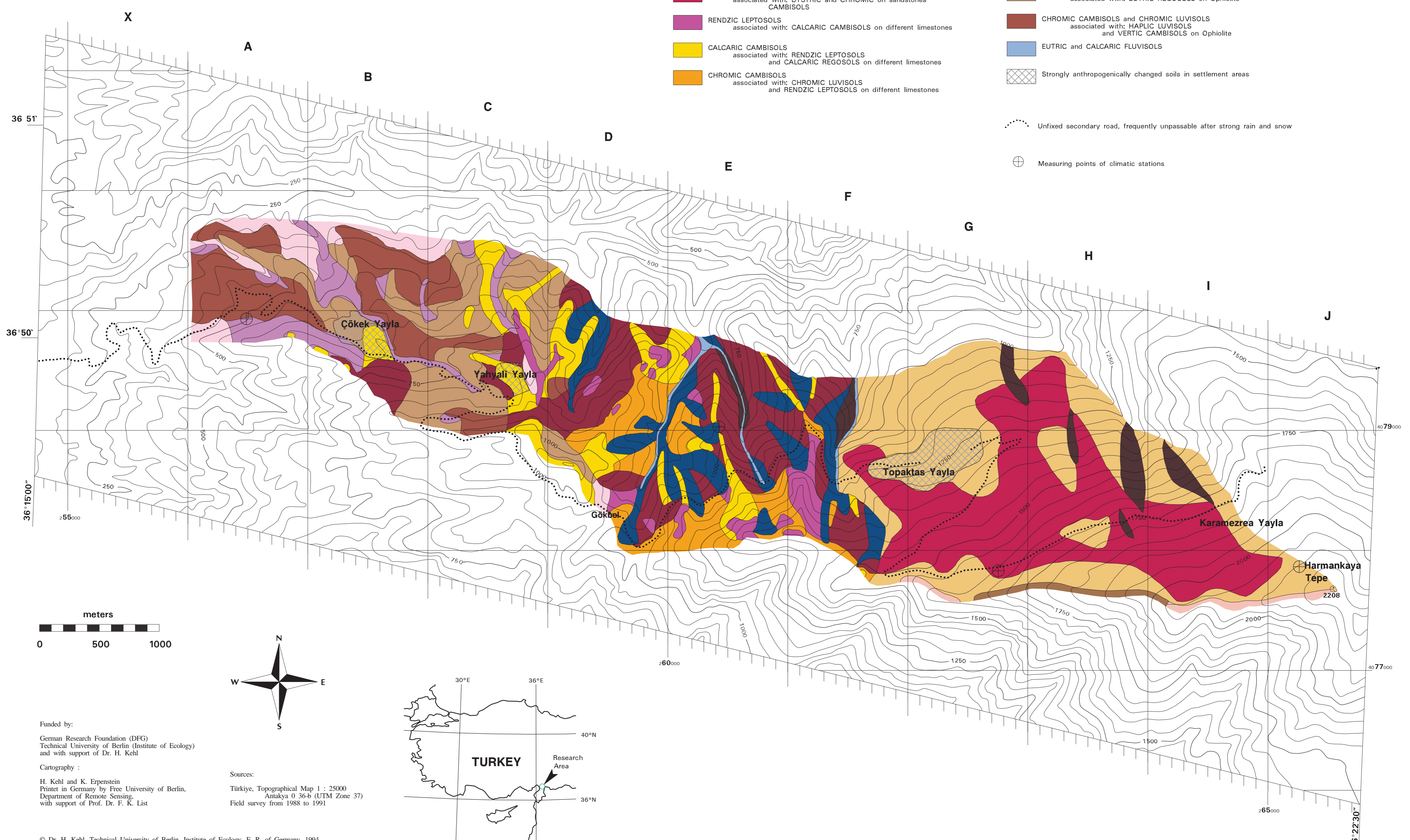
Authors: H. Kehl & D. Pfannschmidt

Soil Units

Soil associations were identified in the field (431 profiles) from 1988 to 1991 by D. Pfannschmidt according to FAO soil classification

- DYSTRIC LEPTOSOLS associated with: LITHIC LEPTOSOLS on sandstones
- UMBRIC LEPTOSOLS associated with: HUMIC CAMBISOLS and HUMIC ALISOLS on sandstones
- HUMIC CAMBISOLS associated with: LITHIC LEPTOSOLS and HAPLIC PHAEZEMS on sandstones
- DYSTRIC CAMBISOLS associated with: DYSTRIC REGOSOLS and DYSTRIC LEPTOSOLS on sandstones
- HAPLIC ALISOLS associated with: DYSTRIC and CHROMIC on sandstones CAMBISOLS
- RENDZIC LEPTOSOLS associated with: CALCIC CAMBISOLS on different limestones
- CALCIC CAMBISOLS associated with: RENDZIC LEPTOSOLS and CALCIC REGOSOLS on different limestones
- CHROMIC CAMBISOLS associated with: CHROMIC LUVISOLS and RENDZIC LEPTOSOLS on different limestones
- CHROMIC LUVISOLS associated with: CALCIC CAMBISOLS and RENDZIC LEPTOSOLS on different limestones
- CALCIC PHAEZEMS associated with: CALCIC CAMBISOLS and RENDZIC LEPTOSOLS on different limestones
- EUTRIC LEPTOSOLS associated with: EUTRIC REGOSOLS and HAPLIC ARENOSOL on Ophiolite
- MOLLIC und EUTRIC LEPTOSOLS associated with: HAPLIC PHAEZEMS and EUTRIC REGOSOLS on Ophiolite
- EUTRIC CAMBISOLS associated with: EUTRIC REGOSOLS on Ophiolite
- CHROMIC CAMBISOLS and CHROMIC LUVISOLS associated with: HAPLIC LUVISOLS and VERTIC CAMBISOLS on Ophiolite
- EUTRIC and CALCIC FLUVISOLS
- Strongly anthropogenically changed soils in settlement areas

- Unfixed secondary road, frequently unpassable after strong rain and snow
- ⊕ Measuring points of climatic stations



Funded by:
 German Research Foundation (DFG)
 Technical University of Berlin (Institute of Ecology)
 and with support of Dr. H. Kehl

Cartography :
 H. Kehl and K. Erpenstein
 Printed in Germany by Free University of Berlin,
 Department of Remote Sensing,
 with support of Prof. Dr. F. K. List

Sources:
 Türkiye, Topographical Map 1 : 25000
 Antalya 0 36-b (UTM Zone 37)
 Field survey from 1988 to 1991