

# AMANUS MOUNTAIN

## SE - Turkey (Dörtyol Region)









# Ecological Map

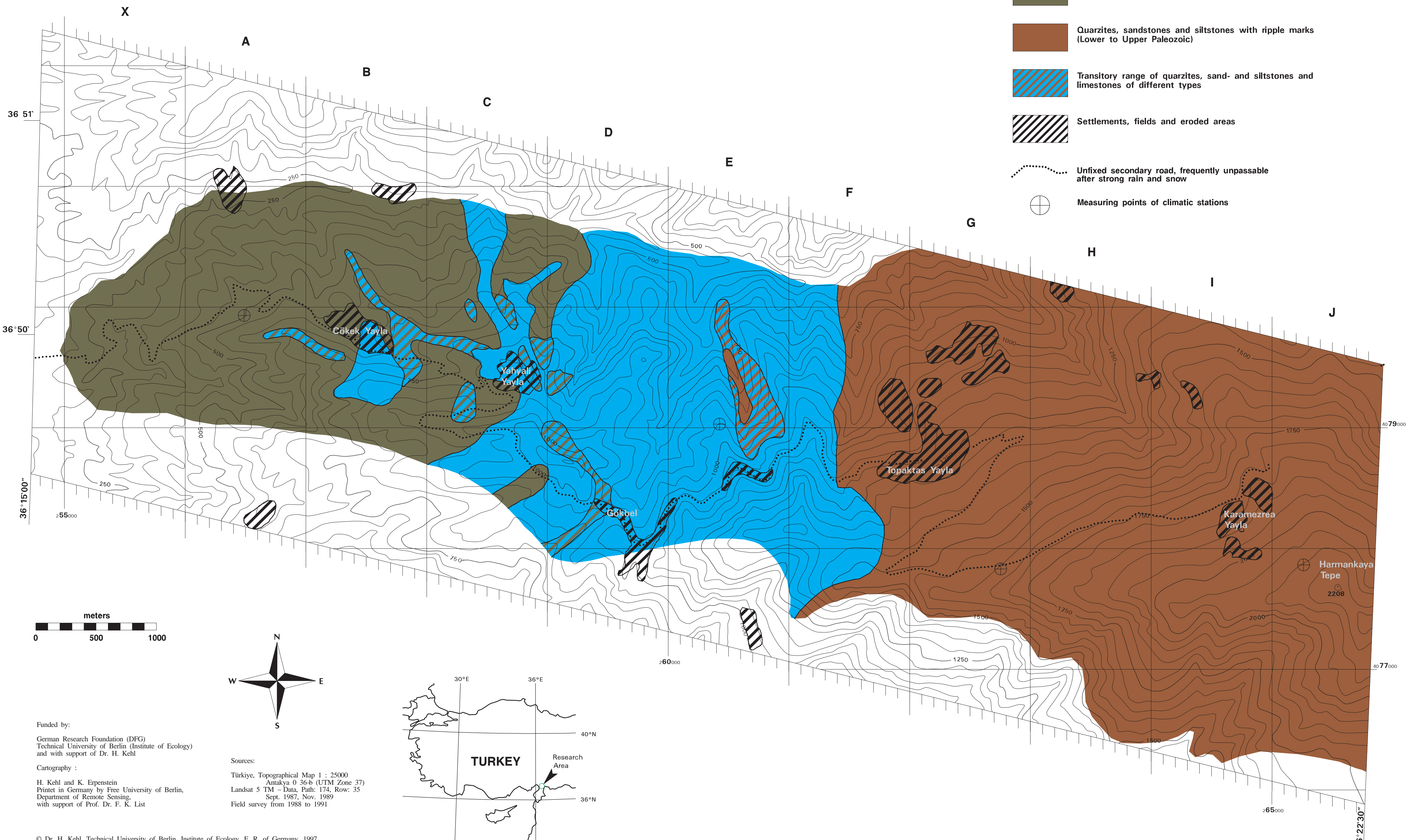
prepared by the research project



Authors: H. Kehl & D. Pfannschmidt

### Geological Formations - Lithology

-  Limestones of different types, incl. dolomitic limestones (Mesozoic - Tertiary)
-  Transitory range of sub-marine basic and ultrabasic greenstones series and limestones of different types
-  Sub-marine basic and ultrabasic greenstone series, incl. Serpentinite (Mesozoic: Upper Cretaceous)
-  Quarzites, sandstones and siltstones with ripple marks (Lower to Upper Paleozoic)
-  Transitory range of quarzites, sand- and siltstones and limestones of different types
-  Settlements, fields and eroded areas
-  Unfixed secondary road, frequently unpassable after strong rain and snow
-  Measuring points of climatic stations



Funded by:  
 German Research Foundation (DFG)  
 Technical University of Berlin (Institute of Ecology)  
 and with support of Dr. H. Kehl

Cartography:  
 H. Kehl and K. Erpenstein  
 Printed in Germany by Free University of Berlin,  
 Department of Remote Sensing,  
 with support of Prof. Dr. F. K. List

Sources:  
 Türkiye, Topographical Map 1 : 25000  
 Antakya 0 36-b (UTM Zone 37)  
 Landsat 5 TM - Data, Path: 174, Row: 35  
 Sept. 1987, Nov. 1989  
 Field survey from 1988 to 1991